



# SureLock for Windows CE/Mobile

## User Guide

All the information contained in this document is the property of 42Gears and meant only for the intended recipient. The contents of the document shall not be used, copied, altered, published, or redistributed without the prior written consent of 42Gears Mobility Systems Pvt. Ltd

## Table of Content

<b>Introduction</b>	<b>4</b>
What is SureLock Studio?	4
How does it work?	4
Requirements	5
Compatibility	5
<b>SureLock Studio Installation</b>	<b>6</b>
<b>Quick Look at SureLock Studio Console</b>	<b>7</b>
SureLock Studio Toolbar	7
Quick Action Toolbar	8
General Tab	9
Keypad Tab	9
Phone Tab	10
Toolbox Tab	10
Administrator Tab	10
Misc. Settings Tab	11
<b>SureLock Studio Projects</b>	<b>12</b>
Create a SureLock Studio Project	12
Building a SureLock Studio Project	14
Deploying a SureLock Studio Project	14
Method 1	14
Method 2	15
Allowing applications in SureLock Studio	15
<b>Configure SureLock Studio Settings</b>	<b>17</b>
Customizing Kiosk Main Screen	17
Disabling Hardware Keys, Custom and Shortcut Keys	18
Create Keyboard Shortcut	19
Disabling Phone Functions	20

Customizing Kiosk Main Screen's Toolbox	21
Password Protect SureLock Studio Lockdown	22
Disable ActiveSync	22
Disable Installation of Applications	22
Disable Autorun	23
Enable Windows Mobile Taskbar	23
Enable Reboot Delay on Startup	23
Automatically Launch SureLock Studio	24
Diagnostics	24
Merge Multiple .cab Files	25
Remote Manager	25
Updating SureLock Studio on the device	25
Manual Update	25
Remote Update	26
Uninstall SureLock Studio from the device	27

## Introduction

### What is SureLock Studio?

**SureLock Studio** is a tool used by enterprises for locking down

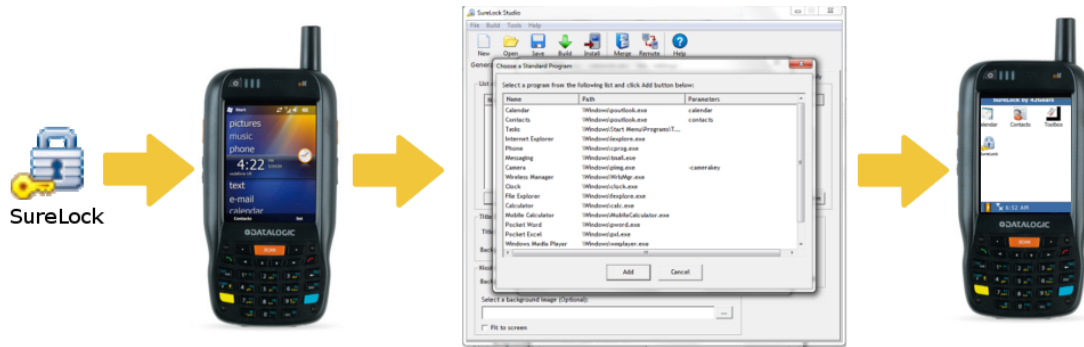
**Windows Mobile/Windows CE** devices. **SureLock Studio** provides kiosk type execution environment on **Windows Mobile/Windows CE** devices where only **Approved** applications are allowed to run.

### How does it work?

By design **Windows Mobile/CE** operating systems are generic platforms. They contain lot of built-in programs like games, browser, messaging apps etc. They also provide the users different ways to access and run those applications.

- Start Menu
- Hardware buttons (keypad)
- Taskbar icons on top
- File Explorer
- Autorun on SD Card
- ActiveSync
- CAB Installation

**SureLock Studio** is a highly configurable solution which enables kiosk type execution environment on **Windows Mobile/CE** devices. You can use **SureLock Studio Console** to create/build lockdown projects by selecting only those **Approved** applications to run, and install it on the device. The users will then have no access to unapproved applications, device settings and other in-built functions.



## Requirements

- Desktop PC with Microsoft Windows XP/Windows 7/Windows 8
- Microsoft ActiveSync (Download latest version from [here](#))
- Windows Mobile Device Center

## Compatibility

**SureLock Studio** is compatible with following versions of **Windows Mobile/Windows CE**:

- Windows Mobile 6.5 (Classic & Professional)
- Windows Mobile 6.1 (Classic & Professional)
- Windows Mobile 6.0 (Classic & Professional)
- Windows Mobile 5.0 (Pocket PC and Pocket PC Phone Edition)
- Windows CE 5.0
- Windows CE 6.0

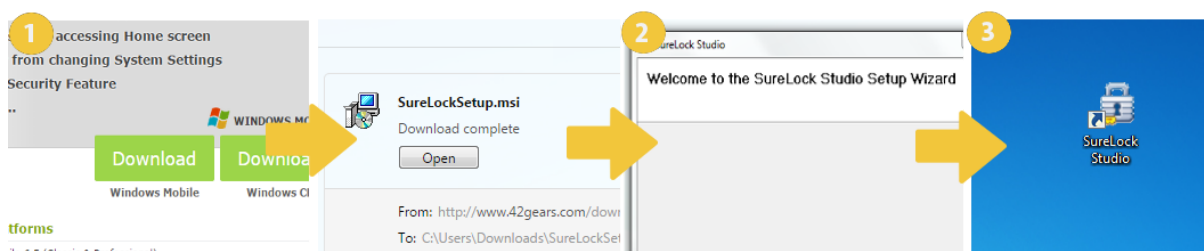
## SureLock Studio Installation

To install **SureLock Studio** on Windows Mobile CE/Mobile, follow the steps mentioned below:

1. Download **SureLockSetup.msi** in your computer from [here](#)
2. Run **SureLockSetup.msi** and follow steps in the installation wizard
3. Once installation is complete a new shortcut will appear on the desktop under

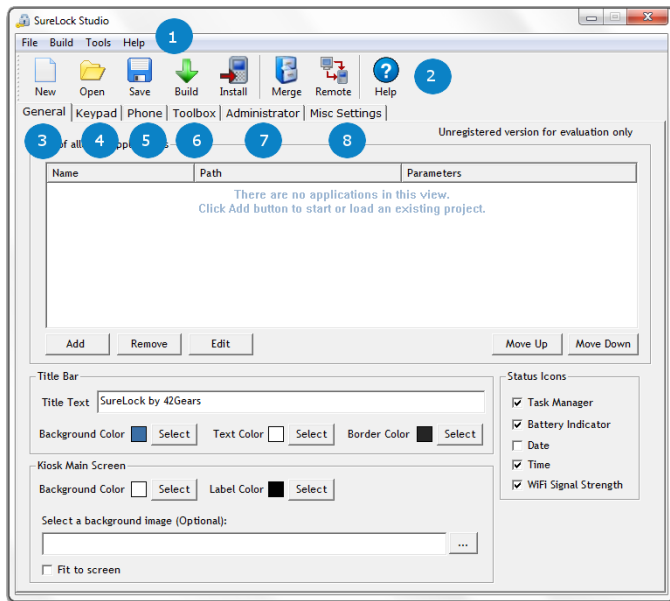
### Programs

Once **SureLock Studio** installed, you can use **SureLock Studio Console** to create, build projects and install them on connected **Windows Mobile/Windows CE** device for lockdown.



## Quick Look at SureLock Studio Console

Let's have a quick look at **SureLock Studio Console**.

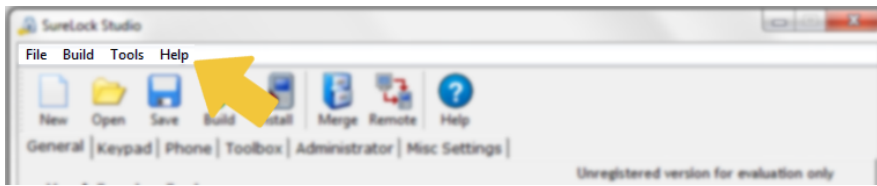


**SureLock Studio Console** has following options:

1. [SureLock Studio Toolbar](#)
2. [Quick Action Toolbar](#)
3. [General Tab](#)
4. [Keypad Tab](#)
5. [Phone Tab](#)
6. [Toolbox Tab](#)
7. [Administrator Tab](#)
8. [Misc. Settings Tab](#)

### SureLock Studio Toolbar

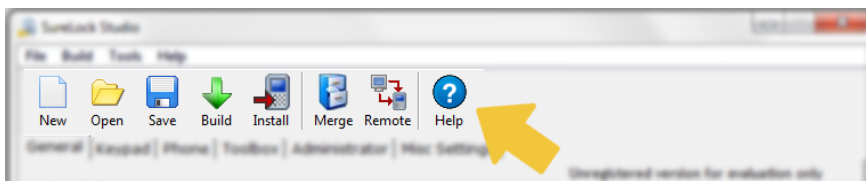
This is a generic toolbar on top of the console has options to:



1. Build a new project/Open an existing project
2. Build Project
3. View Output Folder
4. Install/Merge Cab File
5. Access Remote Manager Features
6. Register/Purchase SureLock Studio
7. Exit SureLock Studio

## Quick Action Toolbar

Quick Action Toolbar has options to:

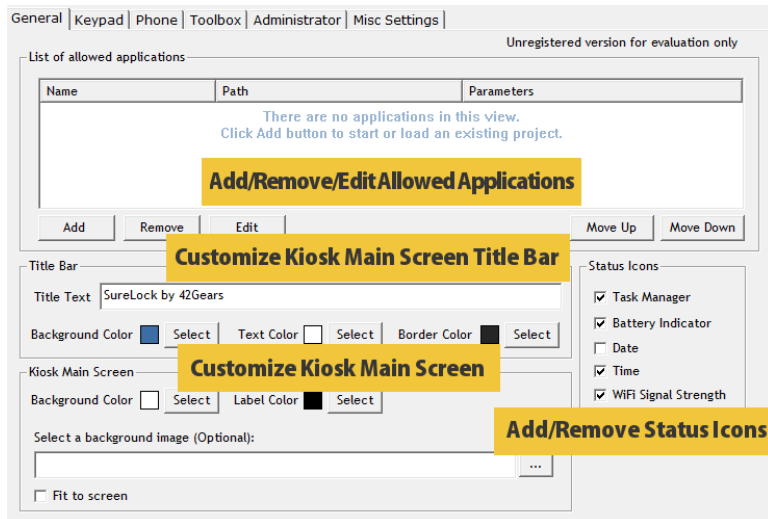


1. Build a new project
2. Open an existing project
3. Save Project
4. Build Project
5. Install Project
6. Merge Cab Files
7. Access Remote Manager Features
8. Help



## General Tab

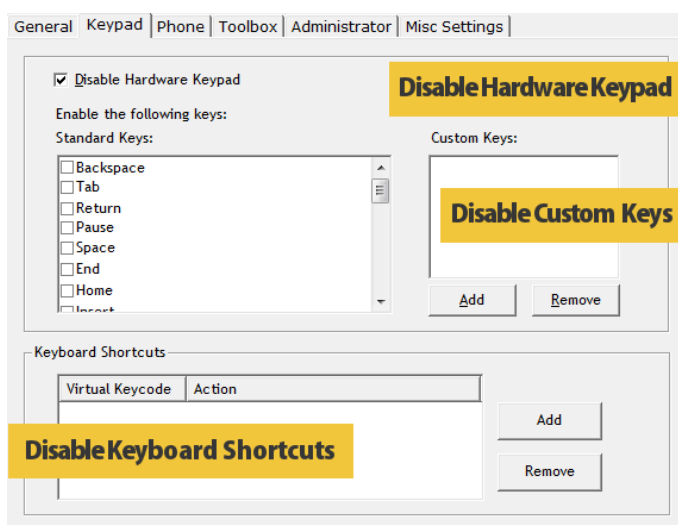
**General Tab** has option to perform following actions:



1. Add/Remove/Edit Allowed Applications
2. Customize Kiosk Main Screen Title Bar
3. Customize Kiosk Main Screen
4. Add/Remove Status Icons

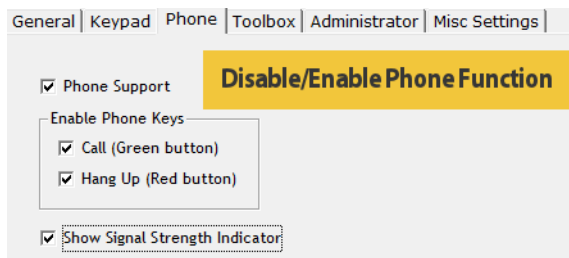
## Keypad Tab

**Keypad Tab** has options to disable keys, keyboard shortcuts and custom keys.



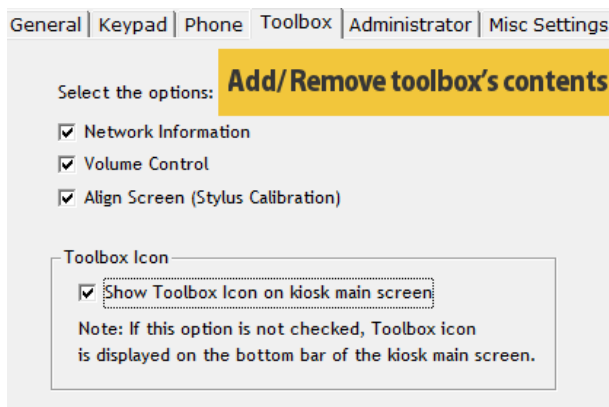
## Phone Tab

**Phone Tab** has options to enable or disable calling function in the device.



## Toolbox Tab

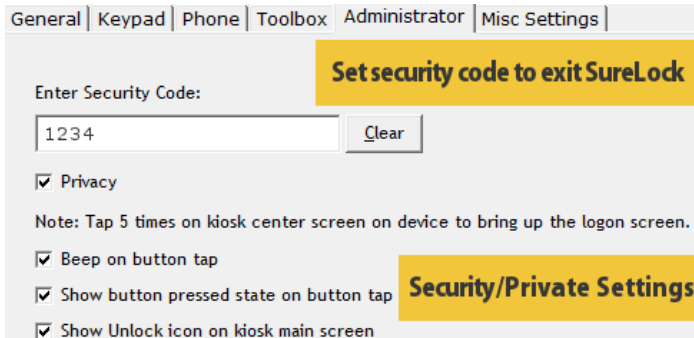
**SureLock Studio Kiosk Main Screen** has a toolbox at the bottom. **Toolbox Tab** has options to enable or disable **Toolbox** and add or remove toolbox's contents.



## Administrator Tab

**Administrator Tab** allows you to set security code to exit **SureLock Studio** and other privacy settings like:

- Beep on button tap
- Show button pressed state on button tap
- Show unlock icon on kiosk main screen



General | Keypad | Phone | Toolbox | Administrator | Misc Settings |

Enter Security Code:

1234

☒ Privacy

Note: Tap 5 times on kiosk center screen on device to bring up the logon screen.

☒ Beep on button tap

☒ Show button pressed state on button tap

☒ Show Unlock icon on kiosk main screen

Set security code to exit SureLock

Security/Private Settings

## Misc. Settings Tab

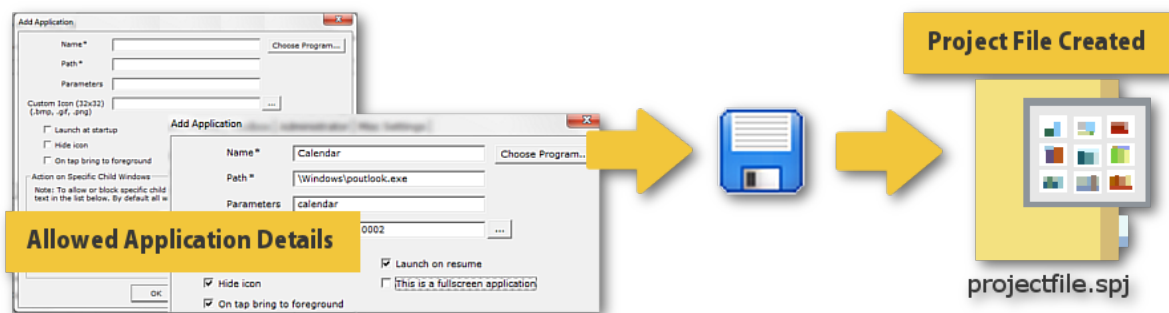
**Misc. Settings Tab** has other settings options like:

- Disable ActiveSync
- Disable Installation of applications
- Disable Autorun
- Enable Windows Mobile Taskbar
- Set Startup Delay after Reboot
- Enable Auto Launch of SureLock
- Enabling Logging

## SureLock Studio Projects

**Projects** in **SureLock Studio** refers to lockdown profiles that you create by specifying details of allowed applications, define general look and feel of the kiosk main screen of the device and set related settings

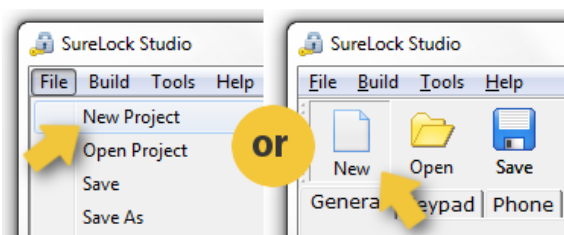
These projects can be saved with lockdown and other general settings and imported to build .cab files which are in turn installed on the **Windows Mobile/Windows CE** devices.



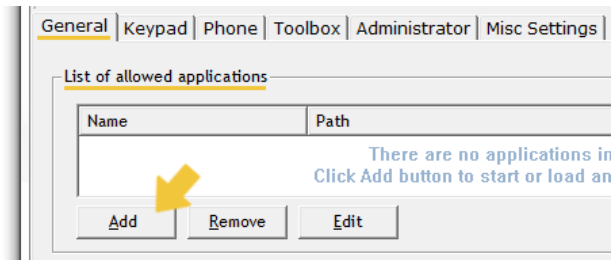
## Create a SureLock Studio Project

To create a **SureLock Studio Project**, follow steps mentioned below:

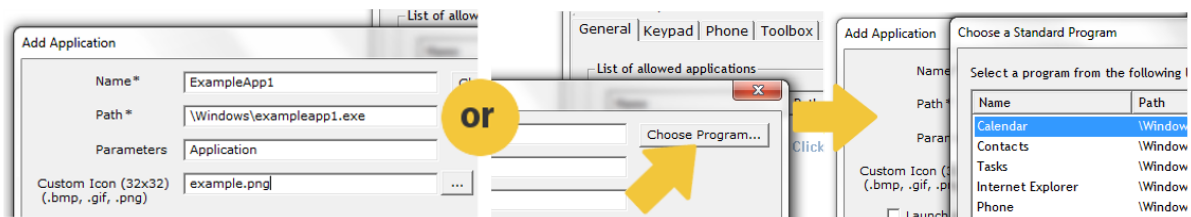
1. Launch **SureLock Studio**.
2. On **Surelock Studio Console**, create a new project either by clicking on:  
File -> **New Project** or by clicking on **New** in **Quick Toolbar**.



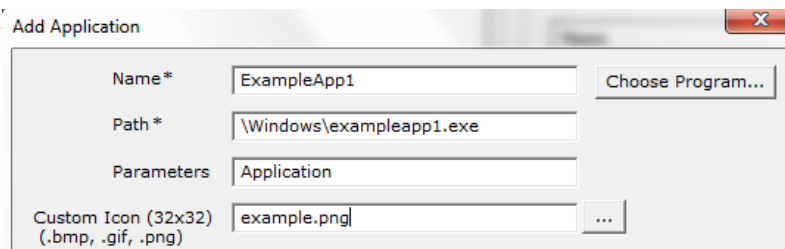
3. On **General Tab**, under List of allowed applications section, click on **Add**



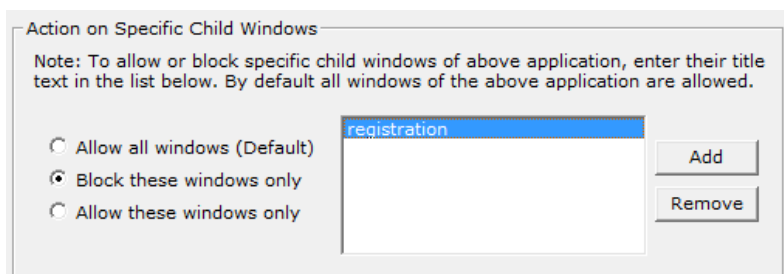
4. On **Add Application** prompt, enter the application details or click on **Choose Program** to select an application from the list of installed applications.



5. Once application is selected, **Path** field will auto populate.
6. Enter a **Parameter** if there is any.
7. Browse and select an image file if you want a custom icon for the allowed application.



8. Specify if there are any specific child windows that you would like to allow or block.



9. Click **OK** to complete.

10. Make desired changes under **Title Bar**, **Kiosk Main Screen**, **Status Icons** and other tabs.
11. Click **Save**.
12. Name the **.psj file** and save.

## Building a SureLock Studio Project

Once project has been created and required information is saved, the next step is to build the project. Output of the build is a cab file which will have the same name as the project name.

To build a **SureLock Studio Project**, follow steps mentioned below:

1. Open an existing .psj file using **Open** option in **Toolbar** or **Quick Action Toolbar**
2. Click on **Build -> Build Project** menu or click the **Build** icon on **Quick Action Toolbar**
3. Once done, output folder will be shown where you will see **.cab** file with same name as the name of the project.

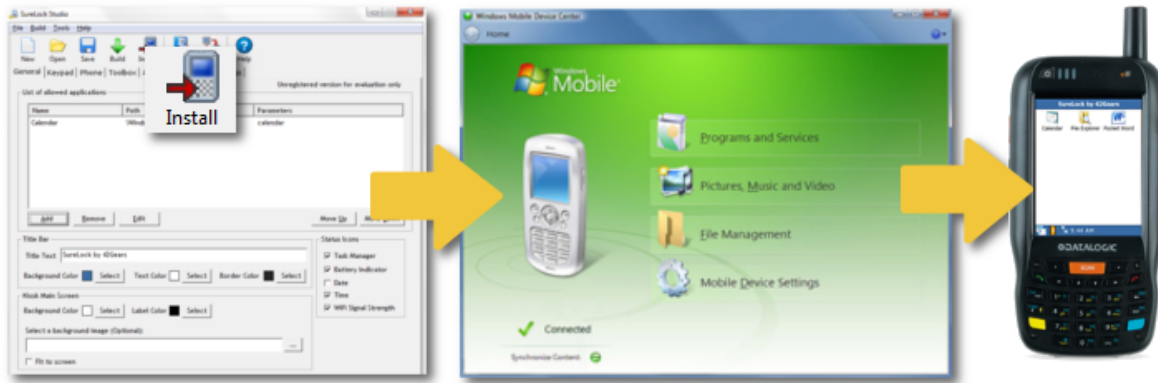
## Deploying a SureLock Studio Project

Once a **.cab** file is generated by the building the project, the next step is to deploy or install the cab file to the **Windows Mobile/Windows CE** device. There are two ways to deploy **SureLock Studio** to the device:

### Method 1

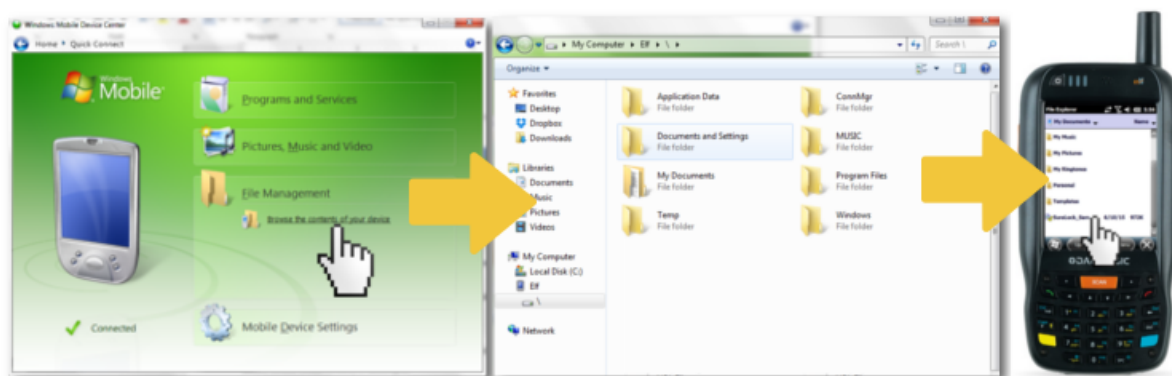
Click **Tools -> Install Cab** or use **Install Cab on Device** icon from **Quick Action Toolbar**.

If the Windows Mobile device is connected to the computer via **ActiveSync**, then the cab file will be installed immediately.



## Method 2

Copy the **.cab** file to the device folder and tap on the **.cab** file to install it. You can use **ActiveSync** or **Storage Card**.



## Allowing applications in SureLock Studio

To specify allowed applications in **SureLock Studio**, follow below mentioned steps:

1. Launch **SureLock Studio Console**.
2. On **General** tab, under **List of allowed applications** section, click **Add**.
3. On **Add Application** prompt, enter following details:
  - Name – Name of application
  - Path – location on device where application .exe file is saved
  - Parameters – If any parameter for the application
  - Custom Icon – Image for application icon



**Note:** Use **Choose Program** option to select for in-built applications.

4. Once done entering application details, specify following details:
  - Launch at startup – launches the application when the device is switched ON
  - Hide Icon - hide application's icon on Kiosk Main Screen
  - On tap bring of foreground
  - Launch on resume
  - This is a fullscreen application
5. On **Action on Specific Child Windows** to restrict or allow child windows of the application, select from following options:
  - Allow all windows
  - Block these windows only
  - Allow these windows only
6. Click **OK** to complete.

You will see the application listed under **List of allowed applications**.



**Note:** You can follow the same process to add more allowed applications.



## Configure SureLock Studio Settings

**SureLock Studio** gives you the option to configure settings such as customizing kiosk main screen, disabling hardware keys, disabling phone functions, disable activesync and more.

### Customizing Kiosk Main Screen

**SureLock Studio Kiosk Main Screen** can be customized with a personalized title bar, background colour and status icons.

To customize **Studio Kiosk Main Screen**, follow steps mentioned below:

1. Launch **SureLock Studio Console**.
2. On the **General** tab, under **Title Bar** section, edit the following details:

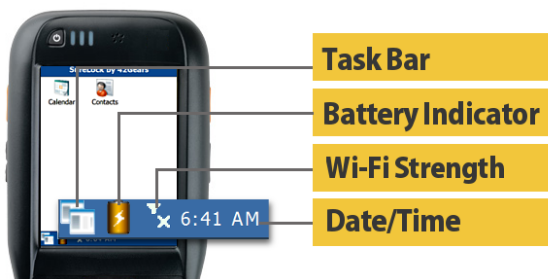


- Title Text
  - Background Color
  - Text Color
  - Border Color
3. On the **Kiosk Main Screen** section, edit the following details:
    - Background Color/ Image
    - Label Color
    - Fit to screen



4. On the **Status Icons** section, enable/disable the following icons:

- Task Manager
- Battery Indicator
- Date/Time
- Wi-Fi Signal Strength



5. Once done click **Save** to complete.

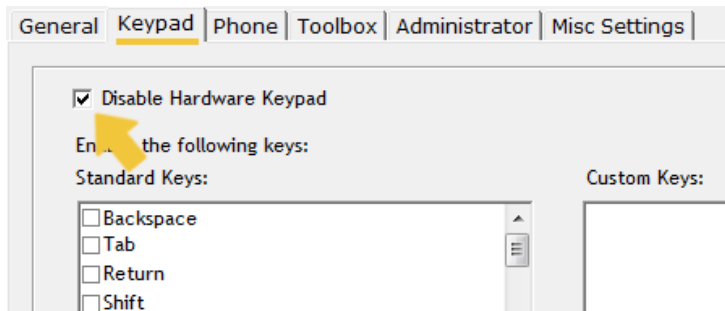
## Disabling Hardware Keys, Custom and Shortcut Keys

**SureLock Studio** also gives you the options to disable keys and custom keys on keypad.

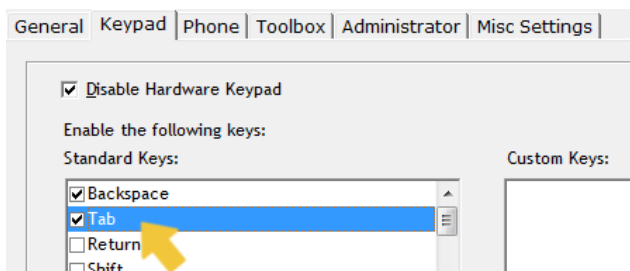
There is also option to create keyboard shortcuts.

To disable certain keys on the keypad, follow steps mentioned below:

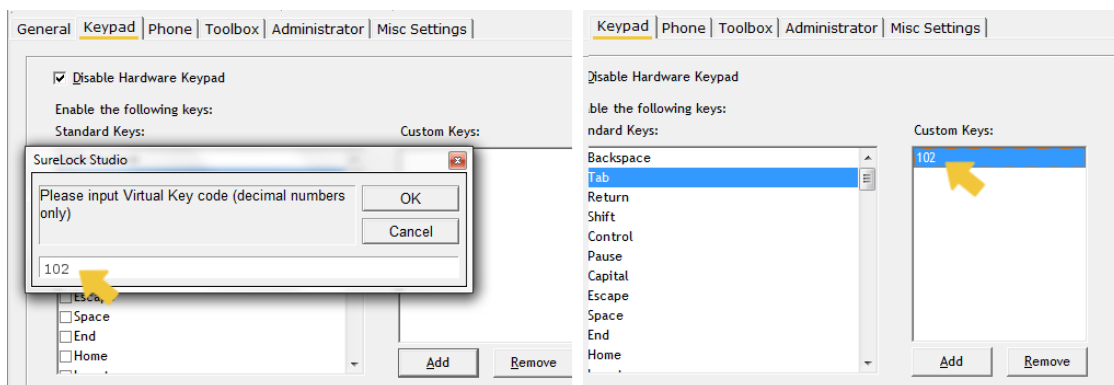
1. Launch **SureLock Studio Console**.
2. On **Keypad** tab, select **Disable Hardware Keypad**.



- Under **Enable the following keys** option, select the keys that you want to allow.



- Use **Custom Keys** option to add any other custom keys that you want to allow.

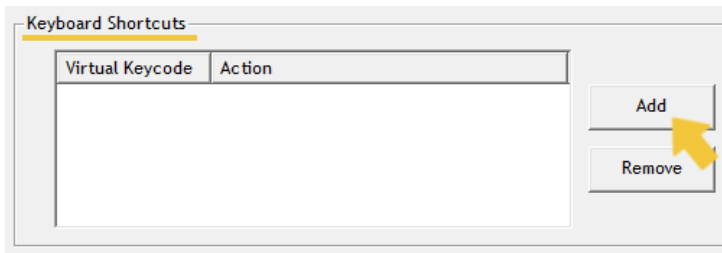


- Click **Save** to complete.

## Create Keyboard Shortcut

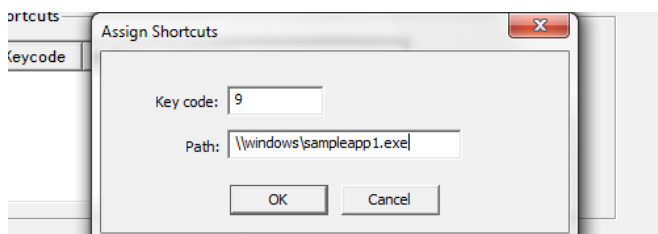
To create a keyboard shortcut to launch an allowed application, follow the steps mentioned below:

- Launch **SureLock Studio Console**.
- On **Keypad** tab, under **Keyboard Shortcuts**, click **Add**.



3. On **Assign Shortcuts** prompt enter follow details and click **OK**:

- Key code – Virtual Keycode
- Path – Location of the application .exe file to be launch when the mentioned key is pressed



4. Click **Save** to complete.

## Disabling Phone Functions

**SureLock Studio Console** has the option to enable/disable phone functions on **Windows Mobile/Windows CE** device.

To allow calling from the device, follow the below mentioned steps:

1. Launch **SureLock Studio Console**.
2. On **Phone** tab, check and enable **Phone Support** option.
3. Check and enable **Call** (Green Button).
4. Click **Save** to complete.

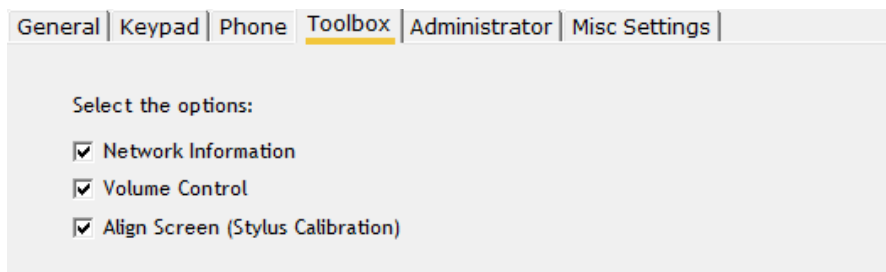
## Customizing Kiosk Main Screen's Toolbox

**Toolbox** refers to set of settings options which is launched when a tool icon on the bottom bar of kiosk main screen is tapped. The content of this bar can be added and removed.



To add settings options in **Toolbox**, follow steps mentioned below:

1. Launch **SureLock Studio Console**
2. On **Toolbox** tab, check and select the settings you want to add in the **Toolbox** from following options:
  - Network Information
  - Volume Control
  - Align Screen (Stylus Calibration)



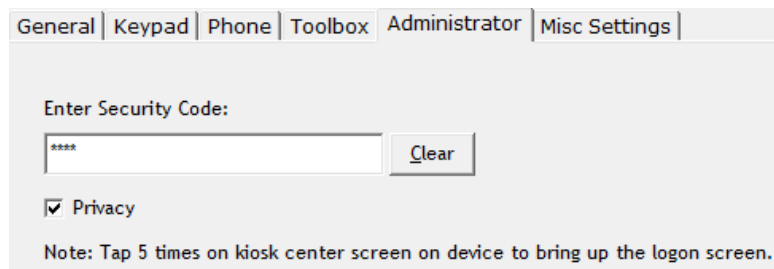
3. Check and select **Show Toolbox Icon on Kiosk Main Screen** if you want **Toolbox** Icon to be shown along with allowed applications.
4. Click **Save** to complete.

## Password Protect SureLock Studio Lockdown

When **SureLock** is running, if the user taps on the screen **5** times within **3** seconds, a password prompt is launched. If users know the password, he can use this option to exit

**SureLock** lockdown. By default, the password is **0000** (four zeros) and if you want to change the password, follow below steps mentioned below:

1. Launch **SureLock Studio Console**.
2. On **Administrator** tab, enter the new password in **Enter Security** field.



3. Click **Save** to complete.

## Disable ActiveSync

**ActiveSync** is a mobile data synchronization application and it synchronizes data with handheld devices and computer. Check **Disable ActiveSync** option under **Misc. Settings** if you want to disable it on the device.

## Disable Installation of Applications

New applications can be installed on **Windows Mobile/Windows CE** devices with use of **.cab** file or in similar ways. If you want to disable any new installations on the device, check **Disable Installation of Applications** option under **Misc Settings** tab.

## Disable Autorun

Check **Disable Autorun** option if you don't want to autorun **SureLock Studio** when device is restarted or switched on.

## Enable Windows Mobile Taskbar

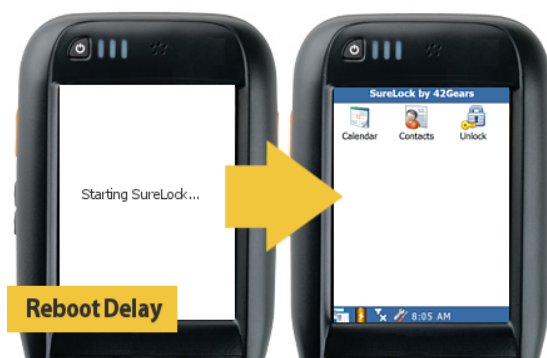
**Windows Mobile Taskbar** is a taskbar which shows list of running programs and has options to switch between tasks and end task. This taskbar can be launched by taping on

taskbar icon on the bottom of the screen. Check **Enable Windows Mobile Taskbar** option to enable the taskbar.



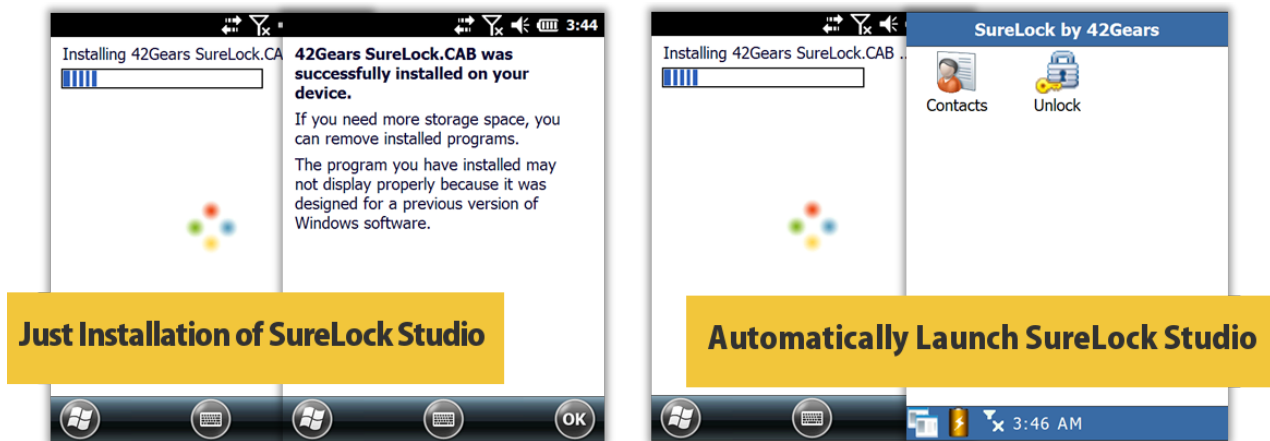
## Enable Reboot Delay on Startup

**SureLock Studio** will auto launch itself when the locked down device is rebooted or switched on. If you want a delay in **SureLock Studio** to launch, enter a value in seconds in **Startup Delay after reboot** field.



## Automatically Launch SureLock Studio

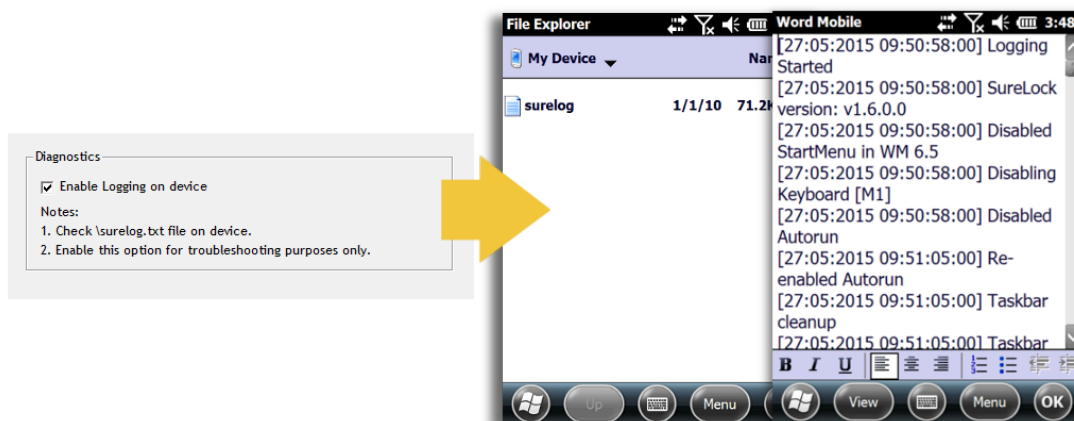
Check and enable this option if you want a prompt to ask the user to launch **SureLock Studio** after its installation. If you do not check this option, when **SureLock Studio** gets installed and it has to be manually launched.



## Diagnostics

Under **Diagnostics** section, enable **Enable Logging** on device option to maintain logs of all the activities in **SureLock Studio**. These logs can be used for troubleshooting purposes.

You can find the log in your device root folder – **surelog.txt**



## Merge Multiple .cab Files

**SureLock Studio** allows you to merge two different .cab files into a single one for easier installation.

## Remote Manager

**SureLock Studio's Remote Manager** helps you perform few key remote activities from viewing properties of open applications to taking a screenshot of the settings.



Following are the actions that you can perform using **Remote Manager** tab:

### **Remote Windows Properties**

This option launches **Remote Window Data** which shows following details about the open application on the device:

- Owner Process: Path of the .exe file of the application
- Window Title: Title of the open window
- Window Class: Class of the open application

**Reboot/Reset Device** – This option reboots the device.

**Capture Screen** – This option opens a window with screenshot of the device.

**View/Delete Logging** – **SureLock Studio** maintains all activities inside the lockdown. You can use **View Log** option to view the log files and **Delete Log File** to delete the files.

## **Updating SureLock Studio on the device**

If **SureLock Studio** is up and running on the device, there are multiple ways to install the updates.

### **Manual Update**

Manual update is applicable if device is physically available.

To install **SureLock Studio** updates manually on the device, follow the steps mentioned below:

1. Unlock the device by entering the administrator code
2. Connect the unlocked device to the desktop and setup **ActiveSync** connection
3. Copy the new **SureLock Studio** cab to a folder on the device or on the storage card
4. Once the cab file is copied, tap on it for installation.

Once installation is complete, reset the device to start **SureLock Studio** again or go to **Start -> Programs** and tap on **SureLock Studio** icon.

## Remote Update

If **SureLock Studio** is already running on the device, then new cab installation will fail or corrupt the settings.

1. Launch **SureLock Studio** and open the project file
2. Click on **Tool -> Create PreUpdate Module** to generate PreUpdate.exe by entering the older administrator code
3. Enter old administrator code to create **PreUpdate.exe**
4. Remotely deploy and run the **PreUpdate.exe** file on the device. This will unlock the device



**Note:** **PreUpdate.exe** contains unlock code for the existing **SureLock Studio** configuration.

*This file should be deleted immediately by the installation script or procedure.*

5. As soon as **PreUpdate** unlocks the device, install the new **SureLock Studio** cab.
6. After the **SureLock Studio** cab is installed, reset the device remotely. After resetting, the device will start in kiosk mode again.

## Uninstall SureLock Studio from the device

If the device is in locked down kiosk mode, it has to be unlocked first.

Once the device is unlocked, go to **Start -> Settings -> Remove Programs**, select **42Gears SureLock Studio** from the list and remove it from the device.