



SureLock for Android Smartwatch User Guide

Ver 2.3

All the information contained in this document is the property of 42Gears and meant only for the intended recipient. The contents of the document shall not be used, copied, altered, published, or redistributed without the prior written consent of 42Gears Mobility Systems Pvt. Ltd

Table of Content

Introduction	4
Getting Started	5
Launch SureLock	5
Access SureLock Admin Settings	8
Admin Settings	10
Allowed Applications	10
Add Allowed Applications	10
Remove Allowed Applications	12
Settings Over Http	14
Fetching SureLock Settings tag	15
SureLock Settings	18
Wallpaper	18
Wallpaper Position	18
Icon Size	19
Font Size	19
Text Color	19
Hide App Title	20
Single Application Mode	20
Exit Single Application Mode	21
Run Only Once	23
Create Single App Mode Exit File	23
Change Password	24
Number of Taps	25
Watch Face	25
Import/Export Settings	26
Export Settings	26
Import Settings	28
Exit SureLock	30
Uninstall SureLock	31
About SureLock	31

Introduction

SureLock for Android helps enterprises to convert Android smartwatches into dedicated-purpose devices, making them enterprise ready.

Platform Support

- Android Smartwatch 2.0 onwards

Key Features

- App Whitelisting
- Single Application Mode
- Password Protected Settings
- Customizable UI
- Mass Device Enrollment

Getting Started

SureLock for Smartwatch can be downloaded from the following sources:

- [42Gears Website](#)

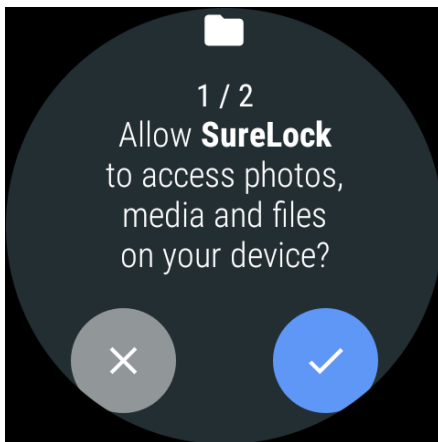
After successful download, tap on **apk** file to install **SureLock**.

- [Google Play](#)

Launch SureLock

To launch **SureLock** on the device, follow these steps:

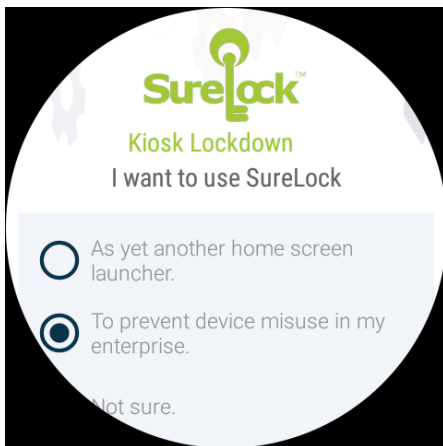
1. Tap **SureLock** icon.
2. On **Runtime Permission** screen, tap ☒ to allow **SureLock** to access photos, media and files of the device.



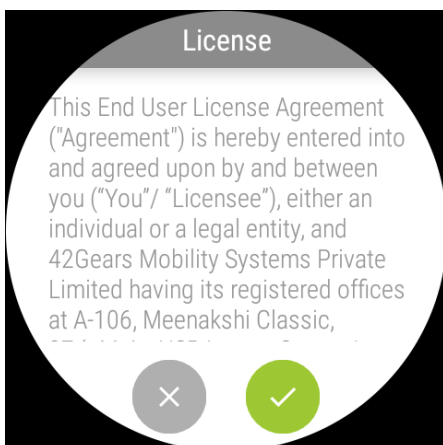
3. On next permission screen, tap ☒ to allow **SureLock** to make and manage calls.



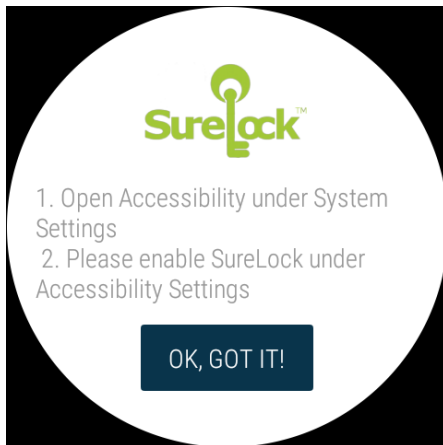
4. Select the purpose for downloading the application and tap **Continue**.



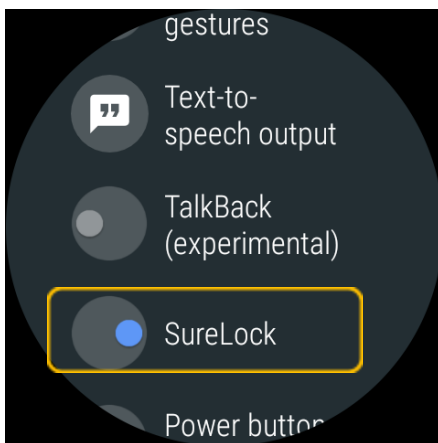
5. Go through the **End User License Agreement** and tap .



6. On the **SureLock** welcome screen, tap **Ok, Got It**.



7. On **Accessibility** screen, turn on **SureLock** option.



SureLock Home Screen will appear on the screen.




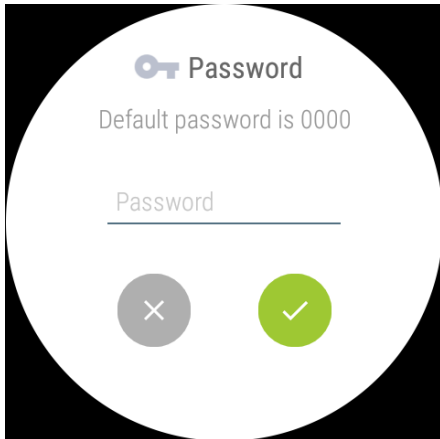
Access SureLock Admin Settings

To access **SureLock Admin Settings**, follow these steps:

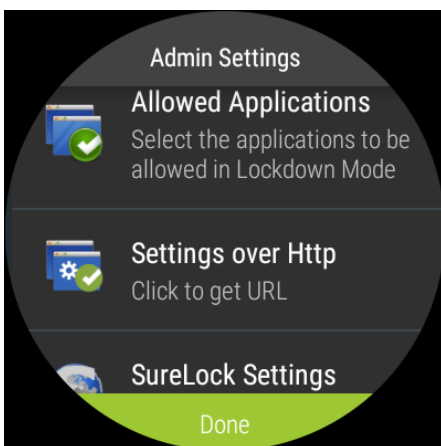
1. Launch **SureLock**.
2. Tap **SureLock Home Screen** 5 times within 3 seconds to launch the password prompt.



3. On the **Password** prompt, enter default password as **0000** (four zeros) and tap . (To change the password, see [Change Password](#).)



On successful login, **SureLock Admin Settings** screen will appear.



Admin Settings

Admin Settings provides options to manage and control the lockdown settings.

Allowed Applications

Allowed Applications option allows admins to specify and allow approved applications.

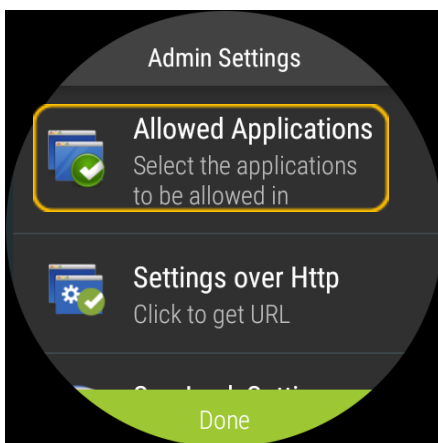
These applications will reflect on the **SureLock Home Screen** and are the only set of applications that the device users will have access to.

Add Allowed Applications

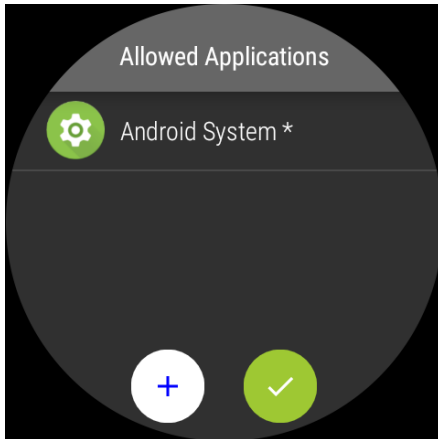
Admin can select the **approved** applications from the list of applications that are available on the device.

To add an **Allowed Application(s)**, follow these steps:

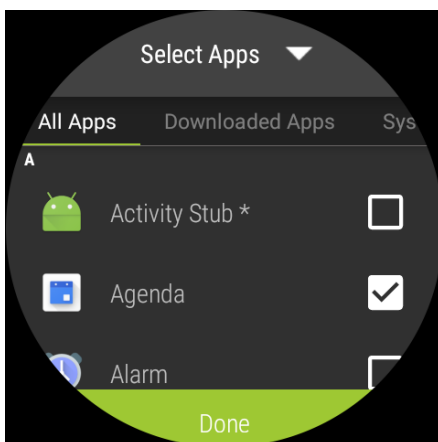
1. Access **SureLock Admin Settings**.
2. On **Admin Settings** screen, tap **Allowed Applications**.



3. On **Allowed Applications** screen, tap **+** to launch the list of installed applications.




4. Select the desired application(s) to allow from the list and tap **Done**.

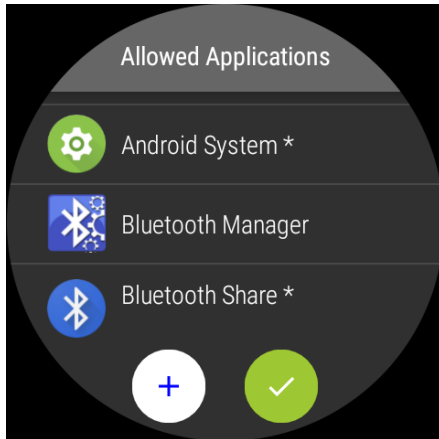


List of all approved applications will get displayed on **Allowed Applications** screen.



Note: The apps installed in the device are listed under different categories such as **All Apps**, **Downloaded Apps**, **System Apps**, **Services**.

5. Tap  to return to **Admin Settings**.



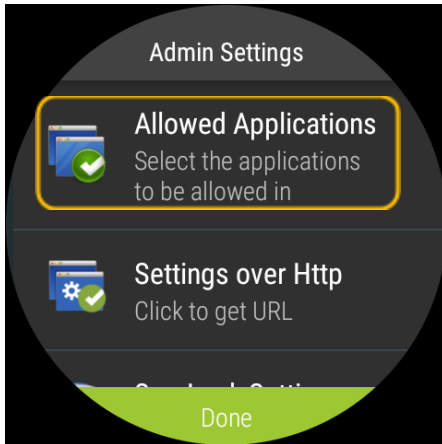
Once done, the user can see the icons along with titles of all allowed applications on **SureLock Home Screen**.



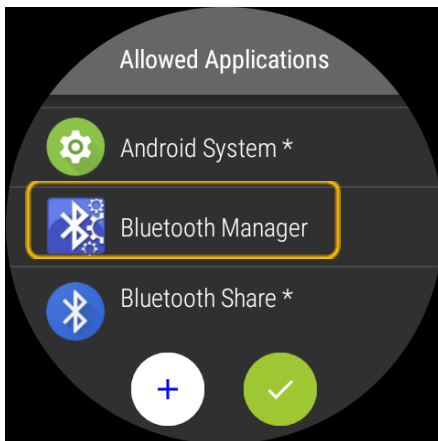
Remove Allowed Applications

To remove an allowed application from SureLock Home Screen, follow these steps:

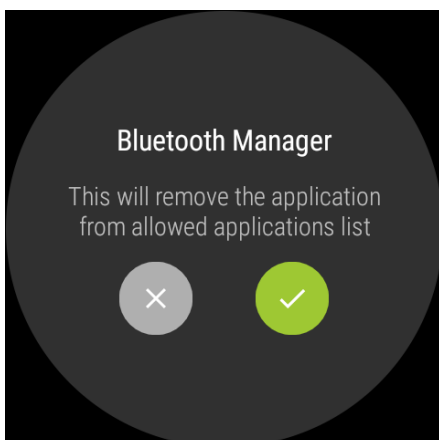
1. Access **SureLock Admin Settings**.
2. On **Admin Settings** screen, tap **Allowed Applications**.



3. On **Allowed Applications** screen, tap the application to remove.



4. Tap  to complete.

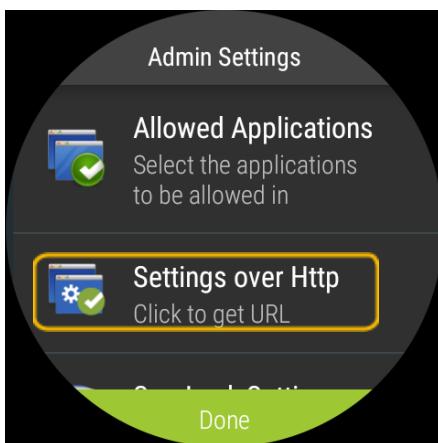


Settings Over Http

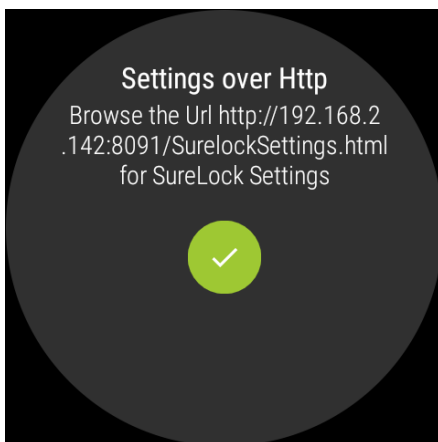
Using **Settings Over Http** option, admin can apply **SureLock** settings using html tags remotely. Also, admin can make changes to the settings using this option.

To remotely apply **SureLock** settings, follow these steps:

1. Access **SureLock Admin Settings**.
2. Select **Settings Over Http**.



URL of the network connected with the device will be displayed.



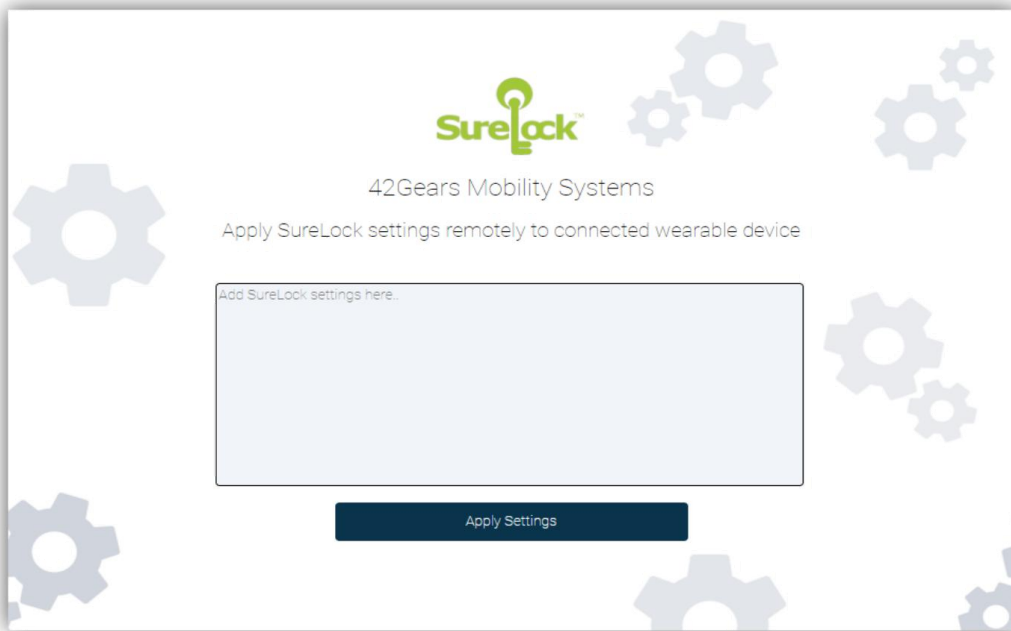
3. On the laptop/desktop, open the browser and enter the URL displayed on the device.

Example : <http://192.168.0.39.8091/SurelockSettings.html>



Note: URL will change according to the network connected with the device.

4. Enter **SureLock Settings** XML tag in the box and tap **Apply Settings**.

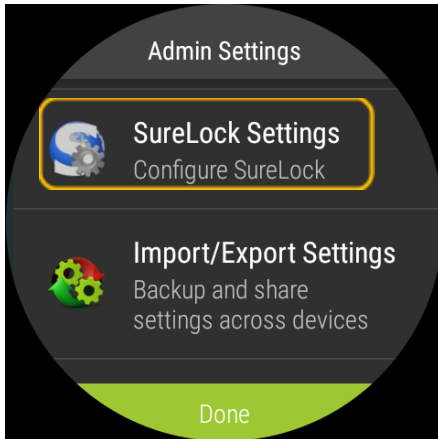


Note: Wearable device & Browser should be connected to the same network.

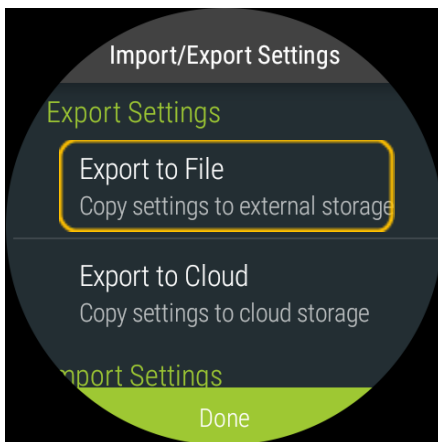
Fetching SureLock Settings tag


To retrieve **SureLock** html tags, follow these steps:

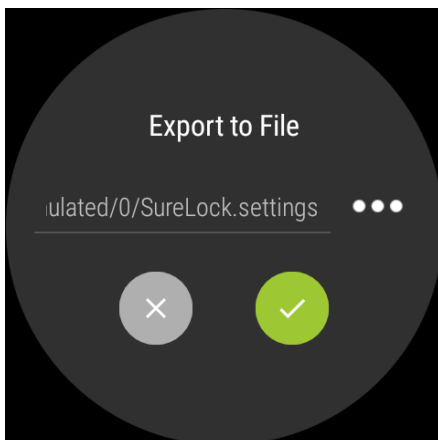
1. Access **SureLock Settings**.



2. Tap **Import/Export Settings** > **Export Settings** > **Export to File**.



3. Select the location for the file to save and tap .



4. Enable **ADB Debugging** option in wearable and retrieve the file using below **adb** command:

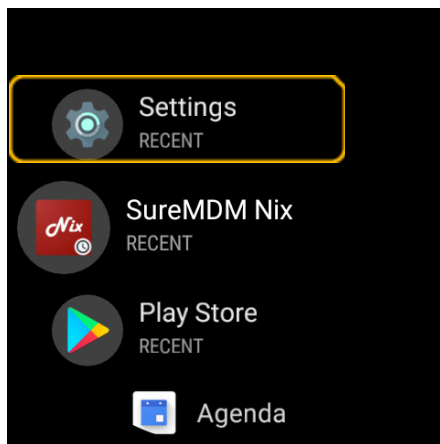
Syntax: **Adb pull <Source file location> <Destination location>**

Example: **Adb pull /sdcard/SureLock.Settings.txt E:\Foldername**

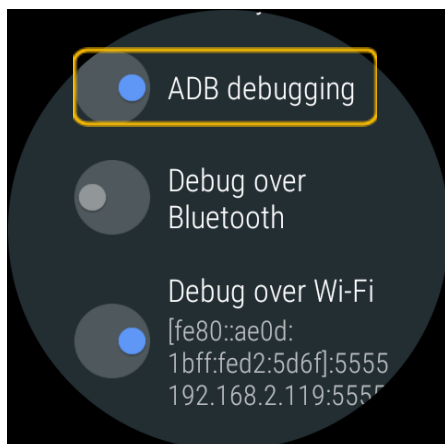


Note: To enable **ADB Debugging**, follow these steps:

A. Access device's **Settings** option.



B. Tap **Developer Options** > turn on **ADB Debugging**.



The retrieved file will have **SureLock** settings in XML tags.

5. Edit this file and make changes as per the requirement using editor
(ex:Notepad++/Notepad) on the desktop / laptop.
6. Copy/paste the commands in **Settings Over Http** browser page and apply settings for different wearable devices.



Note: i. While applying the settings from **Settings Over Http**, the device should not be in Lockdown mode.

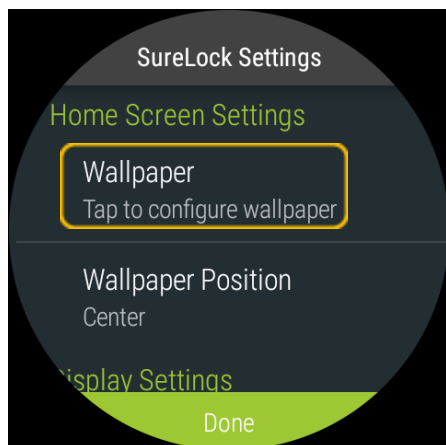
ii. After fetching **SureLock** settings file, disable the **ADB Debugging** option from device's Settings.

SureLock Settings

SureLock Settings offers features to customize **SureLock Home Screen** with wallpaper and configure different display settings.

Wallpaper

SureLock Home Screen can be personalized with a wallpaper. The orientation of the wallpaper (Landscape / Portrait) will be set automatically based on the shape (round/square) of the watch.



Wallpaper Position

Use **Wallpaper Position** option to specify and set the position of the wallpaper. The user has the following options to select from:

- Center
- Fill

Icon Size

Icon Size option will set the size of approved applications' icons on **SureLock Home Screen**. The user has following options to select from:

- Small
- Medium
- Large
- Custom - Enter the desired value for the icon size (between values 10 to 125)

Font Size

Font Size option will set the font size of approved applications' titles on **SureLock Home Screen**. The user has the following options to select from:

- Same Icon size
- Small
- Medium
- Large
- Custom Font Size - Enter the desired value for the text size (between values 10 to 100)

Text Color

Admin has the option to select a text color from the list for approved applications' titles on **Surelock Home Screen**.

Hide App Title

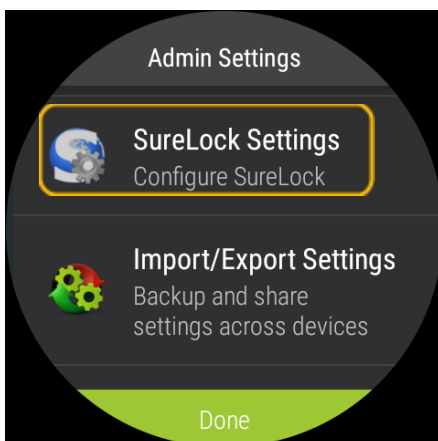
Allowed applications will display as icons with their respective titles on **SureLock Home Screen**. Use **Hide App Title** option to hide the title and display only icons of the approved applications on **SureLock Home Screen**.

Single Application Mode

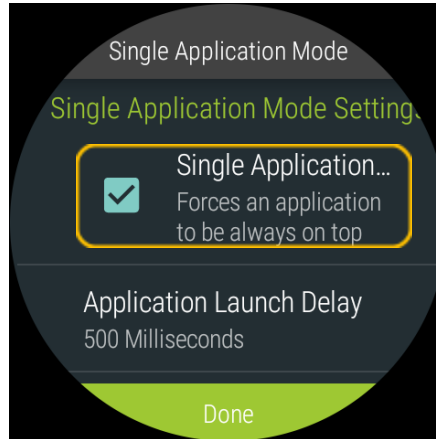
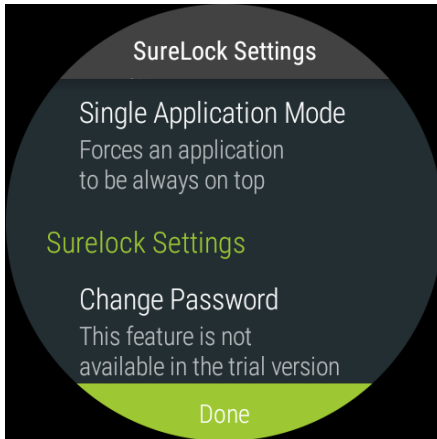
Single Application Mode refers to a state of device lockdown in which there is only one application on the screen. With just one application in the foreground, access to **Home Screen Settings** or other apps will be blocked at all time.

To enable **Single Application Mode**, follow these steps:

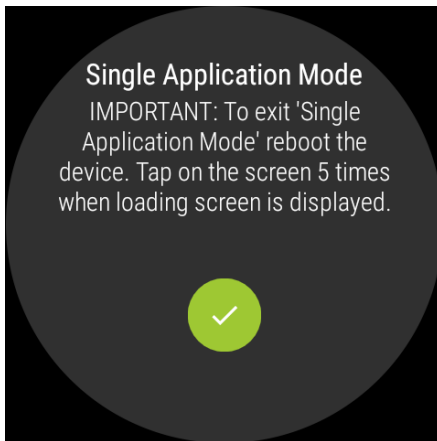
1. Access **SureLock Admin Settings**.
2. On **Admin Settings** screen, tap **SureLock Settings**.



3. On **SureLock Settings** screen, tap **Single Application Mode** and enable **Single Application Mode** option.



Note: Read the precautionary message before tapping **Ok**.



The approved application will run in **Single Application Mode**.

To enable this feature, only one approved application should be available on **SureLock Home Screen**.

Exit Single Application Mode

To exit from **Single Application Mode**, follow these steps:

1. Reboot the device.

- When **SureLock** is loading, tap on the screen for 5 times within 3 secs to launch the password prompt.

Or

Tap 10 times on **SureLock Home Screen** to go back to **Admin Settings**.



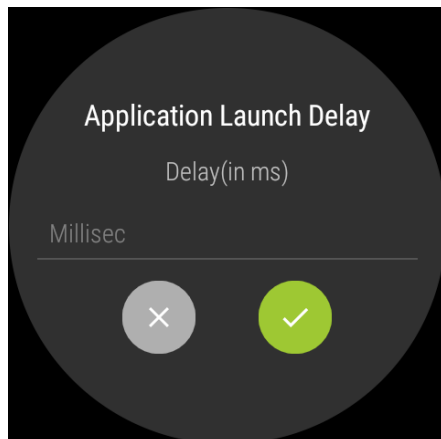
Note: These options are available only once and to activate it again, the user has to reboot the device.

- On **Admin Settings screen**, tap **SureLock Settings > Single Application Mode**.
- Disable **Single Application Mode** option to complete.

Application Launch Delay

SureLock allows the user to delay the launch of **Single Application Mode** after the specified time.

On **Application Launch** Delay prompt, enter a value in millisecs to set a delay in launch of **SureLock**.

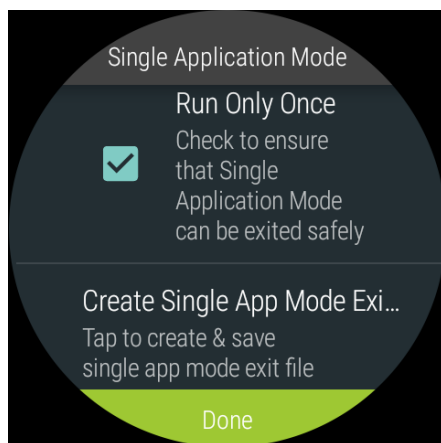


Note: The default time set for the delay of the launch of **Single Application Mode** will be **500ms**.

Run Only Once

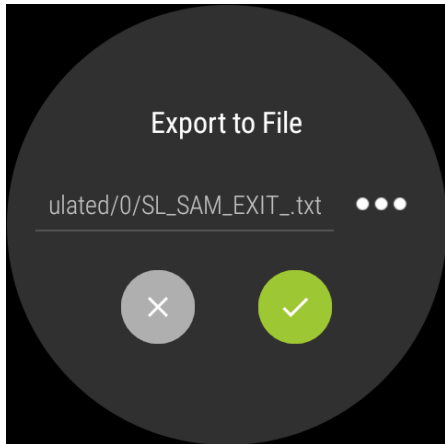
Once this option is enabled will allow running of **Single Application Mode** only once. On reboot of the device, **Single Application Mode** will automatically get disabled.

If **Run Only Once** option is disabled, the application on **Single Application Mode** keeps launching. It is recommended to use Run Only Once setting for the first time to ensure that **Single Application Mode** can be exited safely.



Create Single App Mode Exit File

This option will create **Single App Mode Exit File** and gets saved in the specified path. This file can be pushed using MDM solution like **SureMDM**. Once the user creates this file and pushes to the device, **Single Application Mode** will get disabled for first 10 minutes.



Change Password

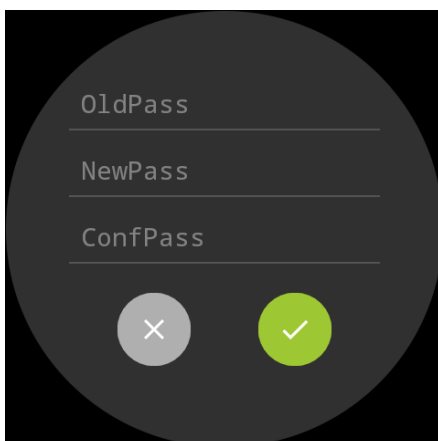
Password to access **SureLock Admin Settings** can be changed using **Change Password** option.




Note: In case of forgotten password, the user has to factory reset the device.

To change the password, follow these steps:

1. Access **SureLock Admin Settings**.
2. On **SureLock Settings screen > SureLock Settings > Change Password**.

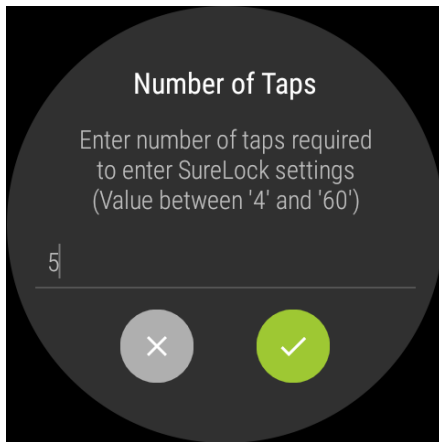


3. Enter the existing password in **OldPass** field.

4. Enter the new password in **NewPass** field.
5. Enter the new password again in **ConfPass** field.
6. Tap  to complete.

Number of Taps

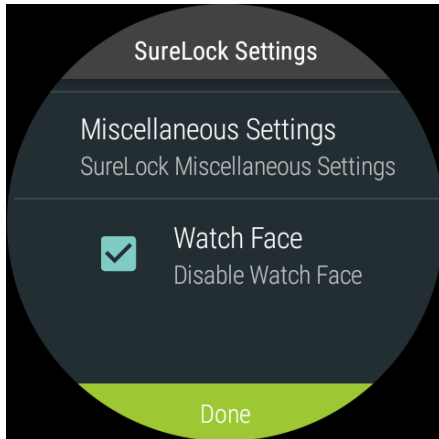
SureLock Settings password prompt by default can be launched with **5 taps** on the screen. **Number of Taps** option allows admins to change this default 5 taps to a desired number of taps.



Note: The value entered for **Number of Taps** should range between **4** and **60**.

Watch Face

Watch Face option will enable specified **Watch Face** when the watch gets into an inactive mode and screen brightness gets dimmed.



Import/Export Settings

SureLock's feature of **Import/ Export Settings** helps in making the gruesome task of configuring multiple devices with identical settings, quick and easy.

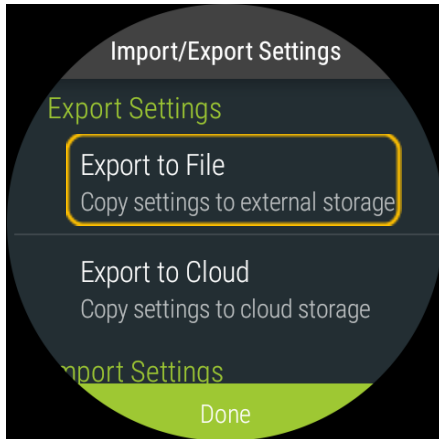
With the option of export or import settings using cloud/file, the user can mass configure the devices in almost quarter of the time, generally required.

Export Settings

Admin can configure device settings on multiple devices and export it to a File or Cloud.

Export to File

Admin can configure multiple devices with identical **SureLock Settings**. **Export to File** can export the settings to a file which can be imported in other devices for similar configurations through **SureMDM** or **ADB** (Android Debug Bridge).

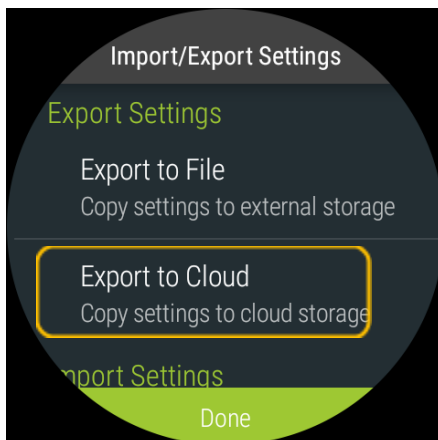


Export to Cloud

Select **Export to Cloud** option to export the settings to the Cloud, if admin doesn't want to save the exported settings to an external storage device.

To export the settings to cloud, follow these steps:

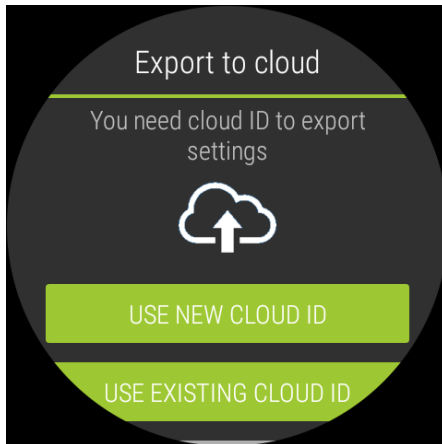
1. Access **SureLock Admin Settings**.
2. On **SureLock Admin Settings** screen, tap **Import/Export Settings**.
3. On **Import/Export Settings** screen, tap **Export to Cloud**.



4. On **Export Settings To Cloud** screen, tap and select an option from the following:

Use New Cloud ID - Export the SureLock settings to a newly created Cloud ID

Use Existing Cloud ID - Export the SureLock settings to an existing Cloud ID



On successful export to the cloud, a **Cloud ID** is generated which can be referred while importing the settings.



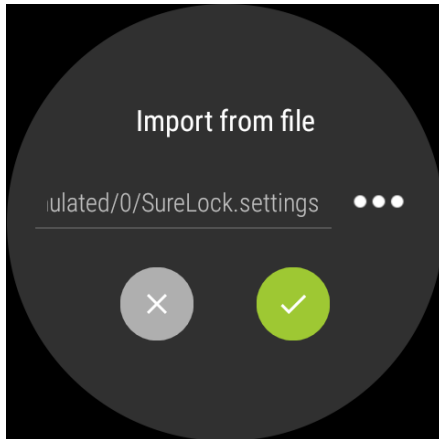
Note: *Cloud ID created will reflect in user **Cloud ID History** unless it is manually cleared.*

Import Settings

Admins can import the **SureLock** settings from **File** or **Cloud**.

Import from File

Use **Import from File** option to import **SureLock Settings** from a file.

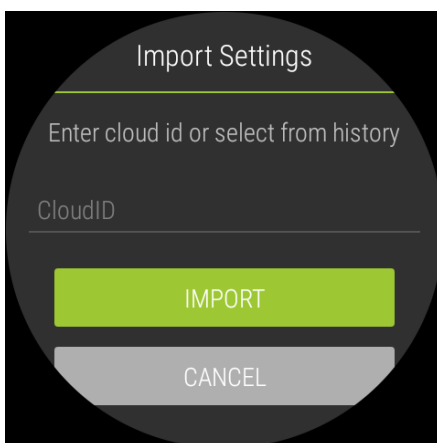


Import from Cloud

To import settings from the cloud for multiple devices, follow these steps:

1. Access **SureLock Admin Settings**.
2. On **SureLock Admin Settings** screen, tap **Import/Export Settings**.
3. On **Import/Export Settings** screen, tap **Import from Cloud**.
4. Following are the options available in **Import Settings** screen,

Import - Enter the **Cloud ID** and tap **Import** or select **Cloud ID** from the **History**

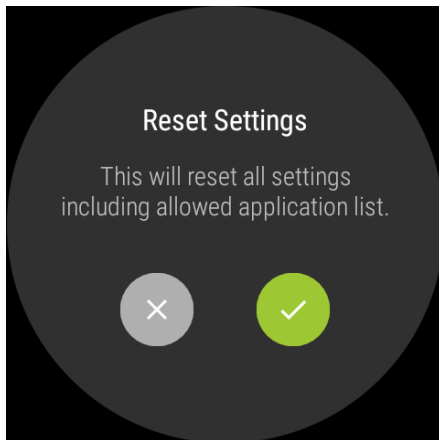


Clear History - Clears all the Cloud histories that are created.

Admin will receive a confirmation on successful import of **SureLock Settings**.

Reset Settings

Reset Settings option will reset all settings in **SureLock** including **Allowed Applications** list.

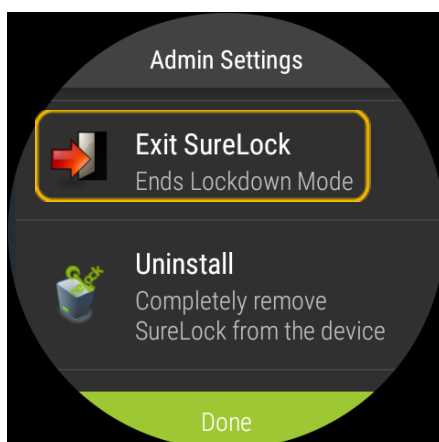


Exit SureLock

This option will exit from **SureLock**.

To exit from **SureLock**, follow these steps:

1. Access **SureLock Admin Settings**.
2. On **SureLock Admin Settings** screen, tap **Exit SureLock**.

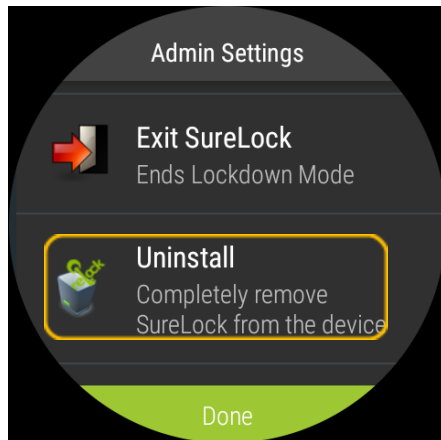


3. Tap **Done** to complete.

On successful exit of **SureLock**, the home screen of the device will be visible.

Uninstall SureLock

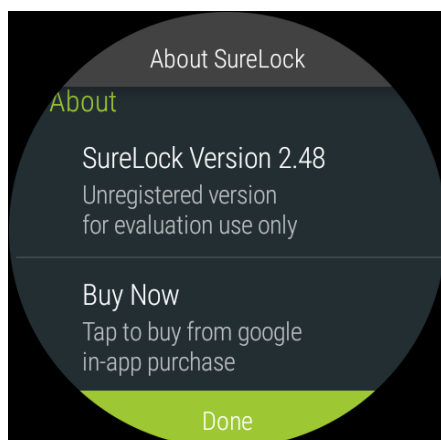
Select **Uninstall** to remove **SureLock** and its settings permanently from the device.



Note: While uninstalling **SureLock**, current system settings of the device will not be altered.

About SureLock

About SureLock provides General, Device, License and Diagnostics information of the **SureLock** Application.



About SureLock section has following details:

- **SureLock Version** - Displays **SureLock** version installed
- **Buy Now** - Option to buy the product from **google in-app purchase**
- **License valid till** - Displays the date till which user will receive free upgrades
- **IMEI** - Unique number of the device
- **IMSI** - Unique number to identify the user of a cellular network
- **MAC (WiFi)** - a unique identifier assigned to network interfaces for communications on the physical network segment
- **MAC (Bluetooth)** - a unique identifier assigned to network interfaces for communications on the physical network segment
- **GUID** - Unique reference number used as an identifier in computer software
- **Preferred Activation ID** - Option to specify ID used for activation
- **Deactivate** - Option to deactivate **SureLock**