

KioskIE

Browser Lockdown

[Windows CE]

7/14/2011

42Gears Mobility Systems Private Limited

Document version 1.1

Contents

Overview	3
Features	4
Requirements	5
Installation	5
Configuration	6
Usage	10
Password protected settings.....	11
Using KioskIE with SureLock.....	13

Overview

Web-based applications are easy to develop and deploy and hence offer significant advantages to businesses.

42Gears' KioskIE is a browser lockdown solution which gives enterprises a controlled environment to deploy their web based business applications. KioskIE's unique features maximize the productivity of mobile workers, minimize application support and device maintenance.

Features

- Allowed website list
- Block access to browser settings
- Custom Shortcut Menu
- Multiple instance support

Requirements

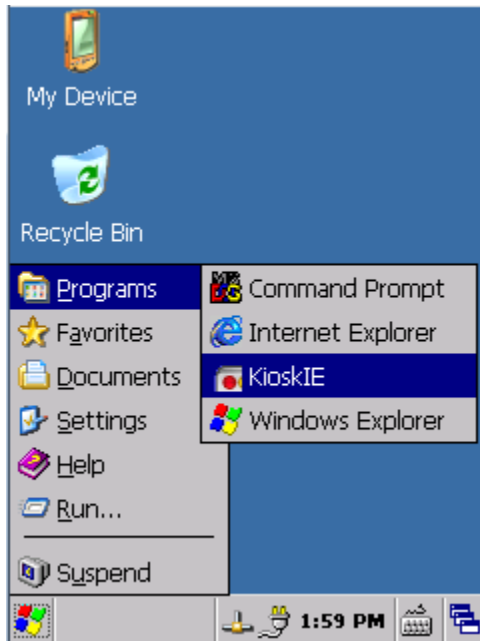
- Windows CE 6.0 device
- .NET CF v2.0

Installation

- Download **kioskiece60.cab**
- Install the CAB file on the device.

Configuration

- Go to the Start->Programs and launch KioskIE icon. See below:



- Following configuration screen will show up.



Following parameters can be configured :

- **Enable KioskIE** : Enables/disables the lockdown of the default Internet Explorer browser on the device.
- **Allowed website list**: If enabled, this setting can restrict access to allowed urls and domain. In order to specify the whitelisted urls, click on the button to the right.

Following screen comes up

Please note that domain names must be exactly specified. For e.g. www.mycopany.com is not same as subdomain.mycompany.com



- **Set Password:** Press this button to go to [set new password screen](#).
- **Version:** Press this button to view the version information of KioskIE.

Usage

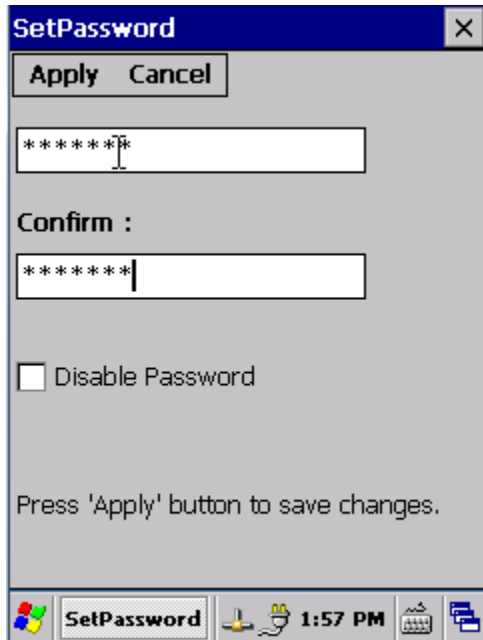
1. Ensure the device has connectivity
2. Launch Internet Explorer (make sure KioskIE is enabled and configured as per [previous section](#))
3. Internet Explorer will start in locked down mode. Access to browser settings and Tap and Hold menu will be disabled.
4. Custom shortcut menu is displayed on tap and hold.



Password protected settings

Administrator can protect KioskIE settings by specifying a password.

Press "Set Password" button on the KioskIE config screen to set/modify/disable password.

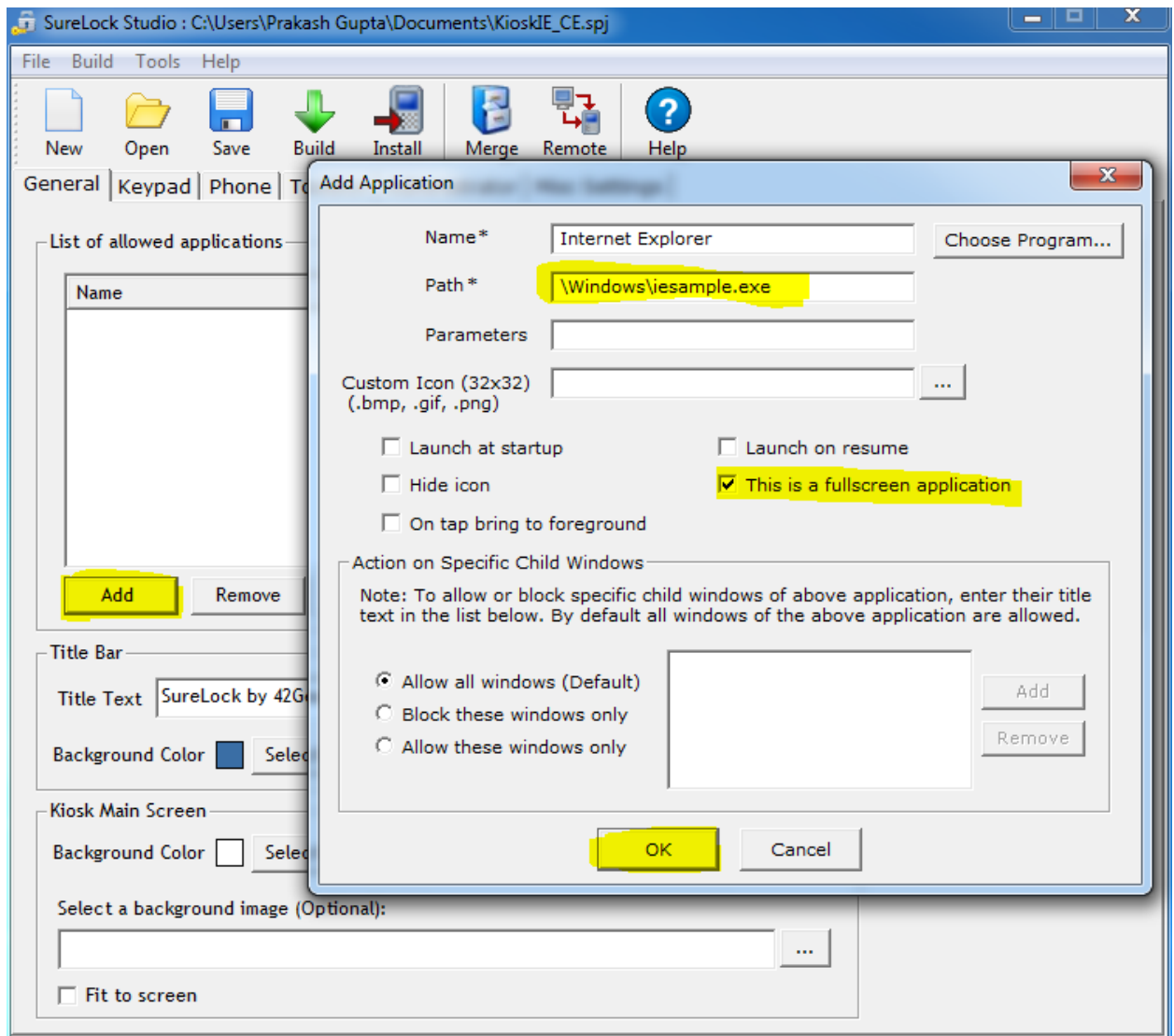


If password is configured, following password screen is displayed when KioskIE configuration applet is launched.



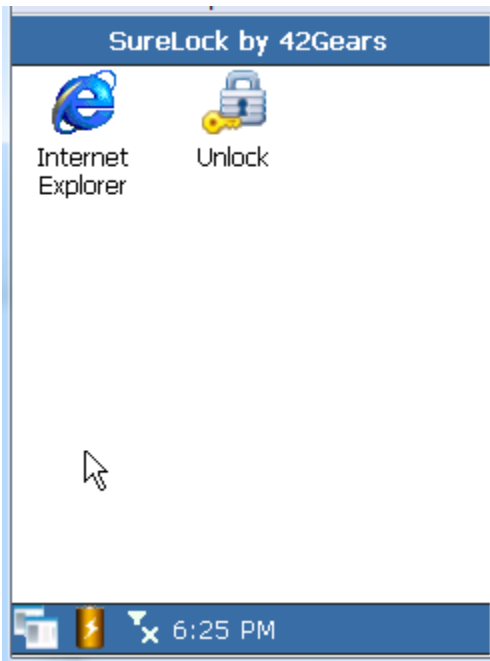
Using KioskIE with SureLock

- 1) Make sure KioskIE is installed and configured properly on the target handheld. See previous sections for detail.
- 2) Launch **SureLock Studio for Windows CE** on the desktop.
- 3) Click **Add** button and specify `\windows\iesample.exe` as allowed application. Make sure that **This is a fullscreen application** option is also selected.



- 4) Click **Save** button to save the project.
- 5) Click **Build** button to generate SureLock cab file.
- 6) Copy and install this cab file on the target handheld.

- 7) Launch **SureLock** program on the device or reset the device to launch it automatically at startup.



Tap on **Internet Explorer** icon to launch IE in complete lockdown mode.

ALL RIGHTS RESERVED

42Gears Mobility Systems reserves the right to make modifications or improvements without prior notification.

42Gears Mobility Systems shall not be liable for technical or editorial errors or omissions contained herein, nor for incidental or consequential damages resulting from the use of this material.

Product names mentioned herein are for identification purposes only and may be trademarks and or registered trademarks of their respective companies.